

KINUGAWA KANAYA HOTEL
INFORMATION



KANAYA HOTEL
KINUGAWA

FLOOR MAP

Every guest room features a terrace where you can enjoy breathtaking views woven by the Kinugawa River Valley in every season.

1F 【Public bath】Four Seasons Bath



The Four Seasons Bath facing the valley offers breathtaking views of the Kinugawa River Valley and fully immerses you in the varied expressions of the river's abundant nature through the four seasons.

■Opening Hours
2:00 p.m. to 1:00 a.m. (Women)
4:00 a.m. to 10:00 a.m. (Men)

1F 【Public bath】Ancient Cypress Bath



The Ancient Cypress Bath surrounded by a garden is equipped with two large outdoor baths, made with white granite and the wood of ancient cypress trees nearly 2,000 years old, and a spacious sauna made of European paulownia wood.

■Opening Hours
2:00 p.m. to 1:00 a.m. (Men)
4:00 a.m. to 10:00 a.m. (Women)

1F Gift Shop



Exclusive items from the Kanaya Select collection - including Tochigi handicrafts, confectionery, and John Kanaya brand products - are sold here.

■Opening Hours
8:00 a.m. to 9 p.m.
(Closed from 12 p.m. to 2 p.m.)

1F Lounge



The terrace offers majestic views of the Kinugawa River, which it overlooks, while the fireplace is the perfect spot to gather with friends and chat. Complimentary coffee, tea, and other drinks are provided.

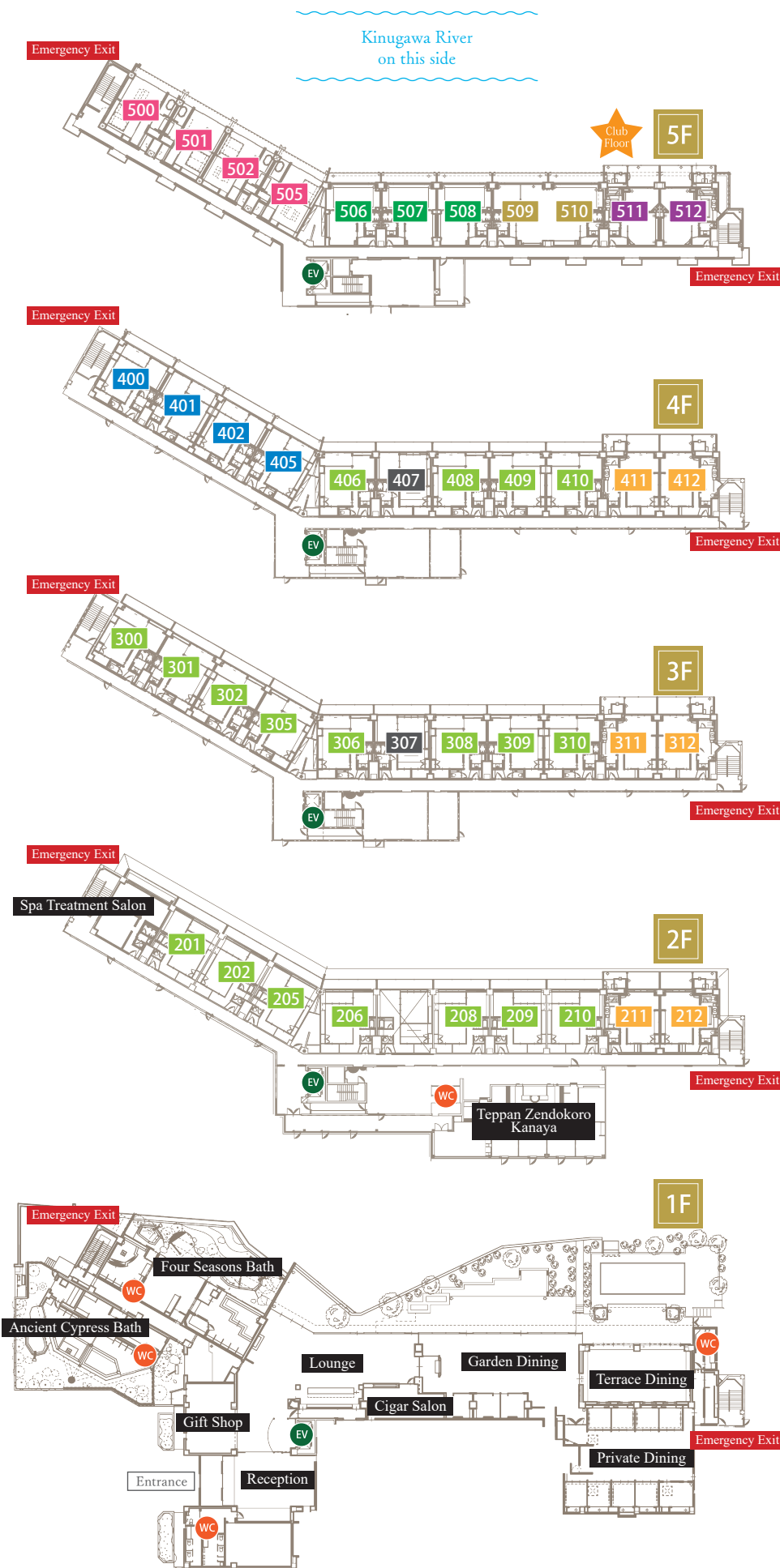
■Opening Hours
8 a.m. to 9:30 p.m.

1F Cigar Salon




Guests can enjoy drinks and cigars in this sophisticated yet relaxed salon adorned with artworks from John Kanaya's personal collection.

■Opening Hours
Open 24 hours
(Cigars can be purchased from 2 p.m. to 10 p.m.)



GUEST ROOMS

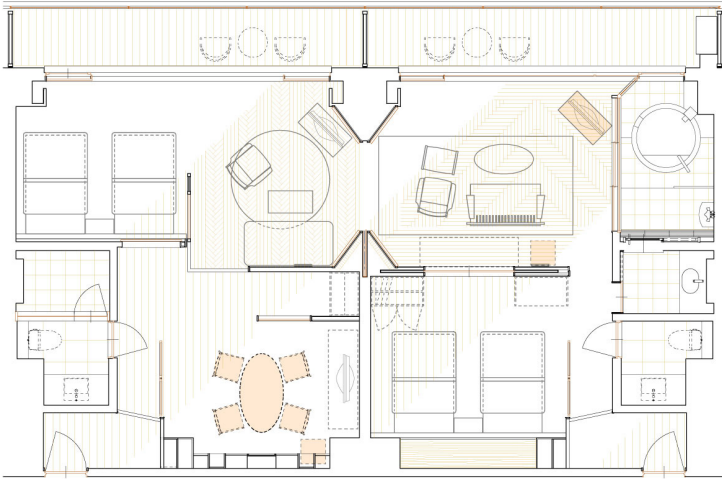
 All guest rooms are non-smoking.

Club Floor

John Kanaya Suite (with view from bath)

John Kanaya Suite has the panoramic view of the Kinugawa River Valley. Feel the natural rhythm of nature while relaxing in the bathtub, taking in spectacular views of the valley. This room is the very definition of mature, refined luxury and relaxation for sophisticated travelers.

type JK



Maximum occupancy: 4
Size: 132m²
Feature: Four Beds, Hot spring bath with a view

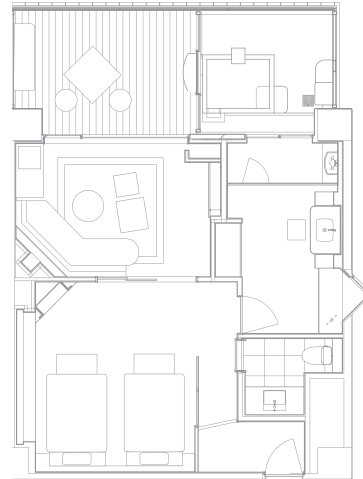
509 510

Club Floor

Western Suite (with open-air bath)

The Western-style suite room located on the uppermost floor of the hotel. Enjoy beautiful views of the Kinugawa River Valley from the private open-air hot spring bath.

type C2



Maximum occupancy: 2
Size: 66m²
Feature: Twin Beds
Open-air hot spring bath

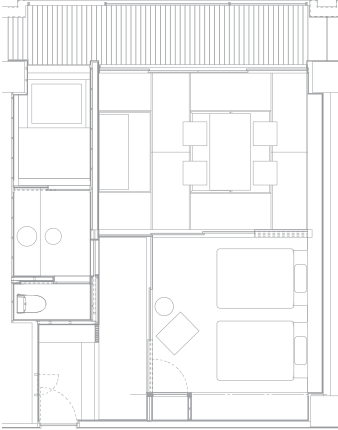
511 512

Club Floor

Japanese-Western Suite (with view from bath)

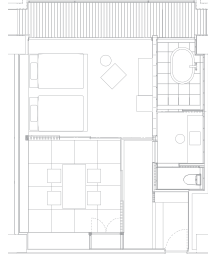
The Japanese-Western suite room located on our uppermost floor. It directly faces the Kinugawa River Valley, and features a terrace and hot spring bath with a splendid view.

type F



500 501

type G



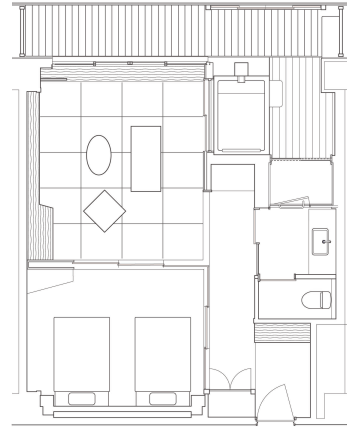
502 505

Maximum occupancy: 2
Size: 66m²
Feature: Twin Beds
Hot spring bath with a view

Deluxe Japanese-Western Room (with open-air bath)

This room harmonizes Japanese and Western styles and has a calm atmosphere. From the open-air bath with open feeling, you can overlook the valley, and you can experience a healing time with the changing of seasons.

type H2



Maximum occupancy: 2
Size: 66m²
Feature: Twin Beds
Open-air hot spring bath

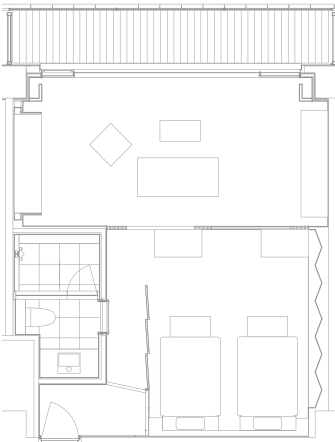
400 401 402 405

Club Floor

Western Room

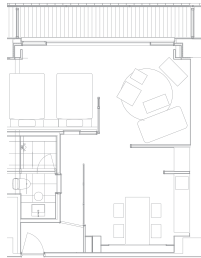
Western room is equipped with a multifunctional shower instead of a bathtub, allowing a spacious living room. Open the window from your room to enjoy an exquisite view of the Kinugawa River Valley.

type C0



507 508

type C1



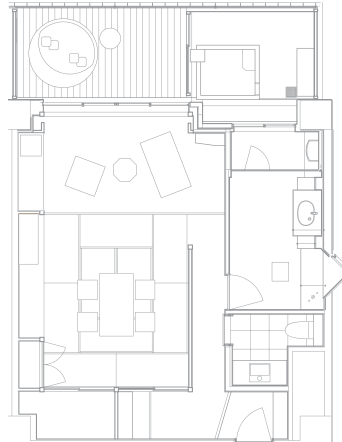
506

Maximum occupancy: 2
Size: 66m²
Feature: Twin Beds
Multifunctional shower

Deluxe Japanese Room (with open-air bath)

Enjoy superb views of the Kinugawa River Valley from the open-air hot spring bath. Feel one with nature in a relaxed, calm atmosphere at spacious terrace.

type A2



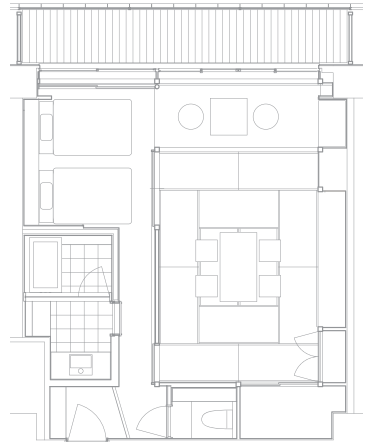
Maximum occupancy: 3
Size: 66m²
Feature: Japanese futon bedding
Open-air hot spring bath

211 212
311 312
411 412

Standard Japanese-Western Room

From the terrace facing the valley you can enjoy the sounds and natural beauty of the Kinugawa River. Enjoy peaceful relaxation in the spacious main room and balcony.

type A1



Maximum occupancy: 4
Size: 66m²
Feature: Twin beds

201 ~ 210
300 ~ 310
406 ~ 410

※This plan view may be different from the real one.

Floor	Room	Type	Memo	
2	201	A1		
	202	A1		
	205	A1		
	206	A1		
	F	208	A1	
		209	A1	
		210	A1	
		211	A2	
		212	A2	

3	300	A1	
	301	A1	
	302	A1	
	305	A1	
	306	A1	
	307		
F	308	A1	
	309	A1	
	310	A1	
	311	A2	
	312	A2	

- Open-air hot spring bath
- Hot spring bath with a view

[Information]

Accommodations : 115 guests

Rooms : 40 rooms (66m²)

- * JK Club Floor John Kanaya Suite (with view from bath): 1 room
- * C2 Club Floor Western Suite (with open-air bath): 2 rooms
- * FG Club Floor Japanese-Western Suite (with view from bath): 4 rooms
- * H2 Deluxe Japanese-Western Room (with open-air bath): 4 rooms
- * A2 Deluxe Japanese Room (with open-air bath): 6 rooms
- * C0C1 Club Floor Western Room: 4 rooms
- * A1 Standard Japanese-Western Room: 19 rooms

Public Bath : Shiki-no-Yu (Four Seasons Bath) / Kodai Hinoki-no-Yu (Ancient Cypress Bath)

Restaurant : JOHN KANAYA (Garden Dining / Terrace Dining / Private Dining)

Teppan Zendokoro Kanaya

Others : Lounge / Cigar Salon / Chocolate Bar / Gift Shop / Spa Treatment Salon

Floor	Room	Type	Memo	
4	400	H2		
	401	H2		
	402	H2		
	405	H2		
	406	A1		
	407			
	F	408	A1	
		409	A1	
		410	A1	
		411	A2	
		412	A2	

5	500	F		
	501	F		
	502	G		
	505	G		
	506	C1		
	507	C0		
	F	508	C0	
		509	C1	
		510	Connecting room for JK	
		511	C2	
		512	C2	



KANAYA HOTEL
KINUGAWA

KINUGAWA KANAYA HOTEL

1394 Kinugawa Onsen Ohara, Nikko,

Tochigi, Japan 321-2522

Tel: +81-288-76-0002 / Fax: +81-288-77-3606

kinugawakanaya.com